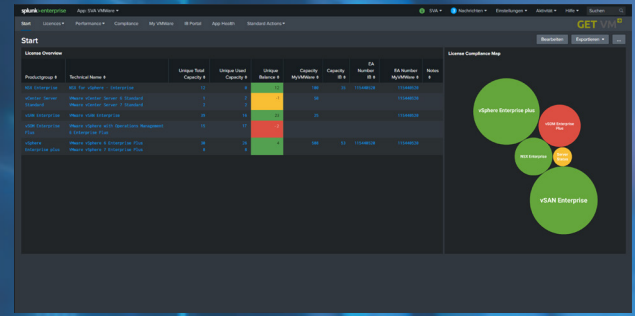


System Installation Requirements for GetVMware Splunk App



1.0 System Requirements for Testing/ POC Usage

Component	Requirement	Notes
CPU	4 Core	2+ GHz CPU
RAM	16 GB	-
Disk	80 GB	min. 800 IOPS
OS	Windows Server 2016 or 2019	-

Warning:

- This System Configuration is not recommended for longer/production use! This is a system recommendation for a proof of concept.

Information:

- In Splunk Free Data Ingest is limited to 500MB/d. Depending on your environment size and collection settings different areas of the app may experience limitations (e.g. limited collection of performance data).
- In Splunk Free the Login Page is disabled.

1.1 System Requirements for Production Environments

SYSTEM 1 of 2 (Splunk (all Splunk Roles))

Component	Requirement	Notes
CPU	12 Core	2+ GHz CPU
RAM	12 GB	-
Disk	250 GB (depends on Data Retention Time)	min. 800 IOPS
OS	Standard 64-bit Linux (preferred Ubuntu Server)	-

SYSTEM 2 of 2 (GetVMware App Data Collection)

Component	Requirement	Notes
CPU	4 Core	2+ GHz CPU
RAM	12 GB	-
Disk	50 GB	-
OS	Windows Server 2016 or 2019	-

2.0 Port/FW Requirements

Port	
443 TCP	SYSTEM 2 (e.g. 1 - POC) <-> All vCenter All Clients <-> SYSTEM 1
9997 TCP	SYSTEM 1 <-> SYSTEM 2 (e.g. 1 - POC)
8089 TCP	SYSTEM 1 <-> SYSTEM 2 (e.g. 1 - POC)
8000 TCP	All Clients <-> SYSTEM 1
Access to https://www.powershellgallery.com/api/v2 (80/443)	SYSTEM 2 (e.g. 1 - POC) <-> www

3.0 User Requirements

Port	
System.Anonymous	The only privilege held by sessions which have not logged in
System.View	Visibility without read access to an entity. This is assigned implicitly by the system, if read privileges are assigned at lower levels in the inventory
System.Read	Grants read access to an entity
Global Licenses	Manage licenses

Information:

- User has to be created on each vCenter connected to Splunk.